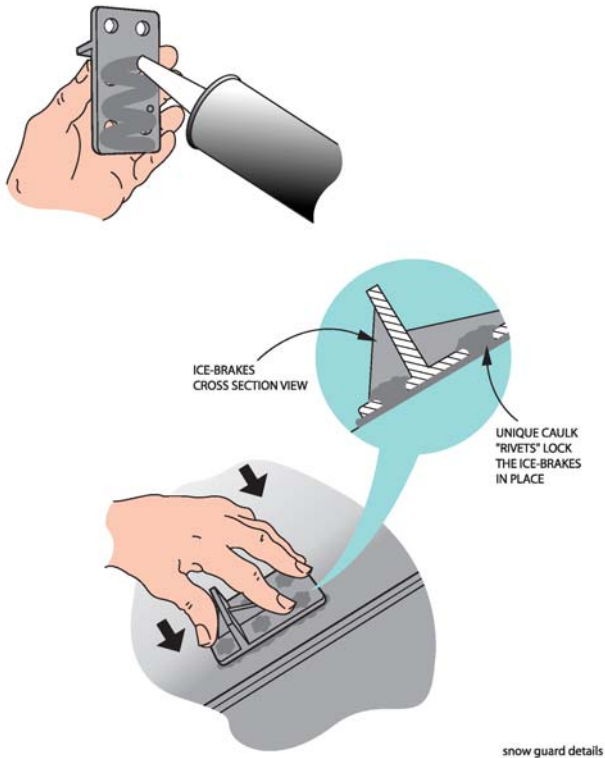


EAST COAST ROOF SPECIALTIES

A DIVISION OF:



IceBrake Installation Recommendations



1. Roof surface should be clean of dirt, oil, and residue. Surface should be wiped with alcohol and completely dry before installing IceBrakes.
2. We recommend measuring and marking the IceBrake locations prior to installation. IceBrakes should be evenly spaced and placed in accordance with layout recommendations.
3. Adhesive should be generously applied to cover the entire bottom of the IceBrake.
4. IceBrake should be pressed firmly in place with the fin towards the eave. Adhesive should rise through the vent holes and from the edges evenly.
5. A small bead of adhesive should be applied around the perimeter of the IceBrake. (If Icebrake is spanning any type of striation or panel profile projection, sealant must fill area under IceBrake so that moisture cannot enter.)
6. At least 3 days of 40 degrees F are required for adhesive to set. Depending on temperature, adhesive will reach maximum strength in seven to fourteen days.

East Coast Roof Specialites recommends Durasil brand adhesive by Chemlink, Inc. for installation of IceBrakes.

Usage guidelines:

1—10.3 oz tube per 10 pieces Model SG1

1—10.3 oz tube per 15 pieces Model SG2.

Notes:

Failure to apply enough adhesive to allow “rivets” of material to rise through vent holes could prevent IceBrakes from functioning properly.

East Coast Roof Specialties is not responsible for determining the structural integrity or load capacity of any roof structure. A licensed design professional should be consulted for such determinations.

24 Lanson Drive
Winsted, CT 06098
Info@icebrakes.com

Tel 860-379-9072
Fax 860-379-2046
www.icebrakes.com